

客 户:

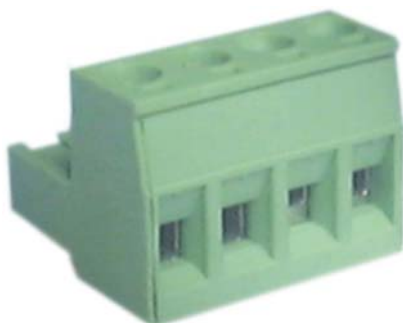
客户型号:

承制方: 广州市卡而博泽电气科技有限公司 承制方型号: PTB750B-03-2-XX-X

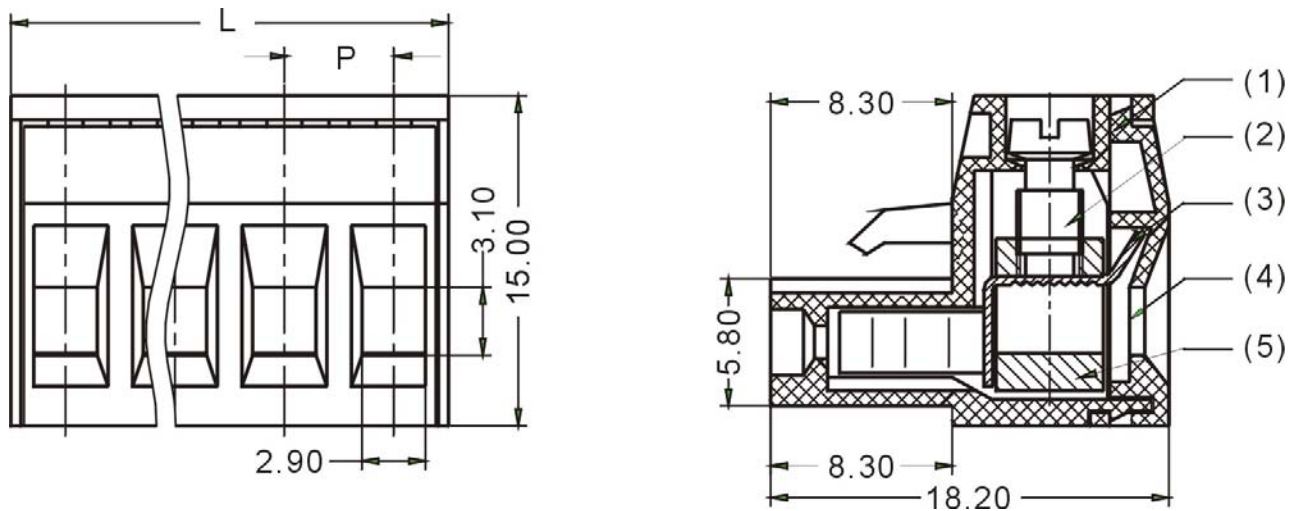
PTB750B-03-2-XX-X 接线端子版本修订页

序 号	版 本	更改内容	更改日期
1	A	新归档	2012-8-14
2			
3			
4			
5			
6			
7			
8			
9			

1、P/N: PTB750B-03-2-XX-X



2、Drawing



P=5.08mm N=2~24

OVERALL SIZES

TOLERANCE:

>120	±0.80
>30~120	±0.50
>6~30	±0.40
0~6	±0.25

3、BOM Table

Item	Parts	Material	Surface Treatment	Qty
(1)	Housing	PA66 UL94 V-0		1
(2)	Screw	Steel M2	Zinc Plated 3μm	N
(3)	Cover	PA66 UL94 V-0		1
(4)	Block	Brass (H59)	Ni Plated 2μm	N
(5)	Contact	Phosphor Copper (QSn6.5-0.1)	Tin Plated 5 μm	N

4、Wire Entrance: Parallel or vertical to PCB

Pitch: 5.08mm

Wire Range: 12-26AWG

5、Technical Data:

Max Torque: 5lbf.in
Electrical Rating: 300V, 10A
Dielectricwith standing: AC2500V,1Min
Breakdown: 4000V
Insulation Resistance: DC500V, More than 500MΩ

6、Working Condition:

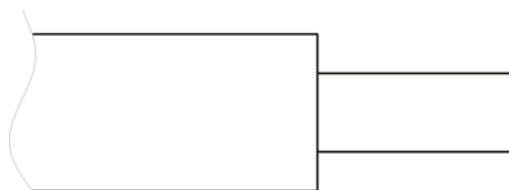
Operating Temperature: -40℃～+105℃
Altitude : Less than 2000m 40Kpa～80KPa
Relative Humidity: 5%～95%
Pollution Degree: III

7、Applicable Standard:

IEC 998-1	UL 1059
IEC 998-2-1	UL 486E
IEC 999	CSA22.2 158-1987
IEC 947	

8、Technique :

Wire is connected to the header of this terminal block by screws. 6.5mm of insulation housing of the wire should be removed. The male connector should be inserted to female connector at no more than 10m/s in condition of no current.



9、Packing : Tightly sealed